



The Dunham Thespians

the Dunham Thespians present...

Jane Austen's

Emma

produced by
Laura Kinsella

24th - 27th April 2019

Dunham Massey Village Hall
7.45pm curtain

A Word from the Chairman

Spring is upon us, and we return for another dose of period drama - this time a slightly more light-hearted piece in Jane Austen's "Emma".

As with "Jane Eyre", (3 years ago now), I'm embarrassed to admit I really didn't know the story. Since the turn of the year however, I've read two stage versions, watched multiple film and TV adaptations, skim read the novel, and ultimately pieced together our own stage version. For better or worse, I certainly have a good handle on the story now! My single paragraph reviews for some of the notable adaptations can be seen opposite - again, do take them with a pinch of salt.



Laura came to the table with a desire to do another costume drama (ever a glutton for punishment!), but the two adaptations we read both didn't quite fit for us, for different reasons. Our own version has required a very fluid set, as the story jumps from location to location at a relentless pace. We decided not to use the rotating set this time, however, partly to keep this production distinct from JE. Instead we've opted to do some simple prop changes, and play with a few fun things on the lighting front. A special thanks to Vanessa for agreeing to run the lighting and sound for us - we're very much in want of someone to assist in this regard, so if you're interested (or know anyone that is), do get in touch. Only some very basic technical competency is needed.

This production sees a welcome return to the stage for Rachael Gallagher, and it's a credit to her for taking on such a mammoth part. She's barely off stage for the duration! With such a big cast, pretty much all the regular members of the society are on stage for this one, and it's fantastic to have a couple of new faces in the mix too. A warm welcome to Linsley Andrews and Linda Irish, and also to James Eckersley who has kindly stepped in to prompt.

The usual thanks as always goes to Trevor Wells for his commitment with the set. We have a proud tradition of overworking our Stage Managers with fanciful challenges, and this play is no exception. I won't spoil the surprise, but you'll know it when you see it.

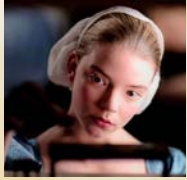
This play has presented a number of challenges to us - one of which was working around various other activities and events in the village hall. Everything from yoga classes, to society AGM's, to the W.I. celebrating their 100th birthday, has impacted on rehearsals at some point. But this is what a community amenity like the village hall is all about - providing a hub for all sorts of diverse activities for people to get involved with. And in return, we're always extremely grateful for the support we get from those in and around the village.

It takes an awful lot of effort and dedication from those who volunteer their time to manage the hall and provide and maintain this space. Let us hope it may continue unabated.

Enjoy the show.

Martin Clare.

"Emma" on Screen



Anya Taylor-Joy

Feature Film (2020)

A new big screen adaptation is in production, scheduled for release in 2020. It will feature talented starlet Anya Taylor-Joy (star of *The Witch*) in the title role, opposite Johnny Flynn (star of *Genius*, and singer/songwriter). The cast also includes Bill Nighy as Mr Woodhouse and Miranda Hart as Miss Bates. It's early days, but the signs are promising.



Johnny Flynn



Romola Garai

BBC Mini-Series - 4 part (2009)

On paper, this should have been a real treat, but I really didn't care for it. Garai is a fine actress, but to be honest her hammy performance is just kind of annoying here. The screenplay is also a bit clumsy, and at 4 hours it's quite drawn out. Miller is engaging at least, and it has a few good moments, but not an adaptation I'd turn to again.



Jonny Lee Miller



Gwyneth Paltrow

Feature Film (1996)

Big budget feature film with an all-star cast including Ewan McGregor, Alan Cumming and Juliet Stevenson. It's visually stunning with beautiful cinematography, but overall it feels a little flat and bland. Paltrow doesn't quite have enough of the conniving minx about her, and Northam is rather too amiable. A pleasant enough watch though.



Jeremy Northam



Kate Beckinsale

ITV Film (1996)

Made for TV adaptation that came out the same year as the big budget screen version above, but surpasses it in nearly every way. It's less visually alluring, but it's the most faithful adaptation here and has the strongest performances. Beckinsale and Strong are perfect, and they're aided by a great support cast including Samantha Morton, Olivia Williams, and a great turn by Prunella Scales. Highly recommended.



Mark Strong



Alicia Silverstone

"Clueless" Feature Film (1995)

The 90s had various modern interpretations of period classics, and *Clueless* became something of a cultural icon. It holds up surprisingly well, mainly because it has just the right level of self-awareness. It obviously strays drastically from the source material, but in many ways it's also a faithful adaptation. It spawned a TV series spin-off; a stage musical; and a remake of the movie is currently in the pipeline.



Paul Rudd



Doran Godwin

BBC Mini-Series - 6 part (1972)

A slightly surreal blend of Georgian Regency and early seventies garish fashion. It's pleasant and good humoured, but six 45-minute parts makes it rather too long. Carson is good in an understated way, but Godwin looks a little old for Emma (despite being in her early 20s at the time). She also has an unfortunately long neck which makes her look like a Cluedo card. Available on Youtube in its entirety.



John Carson

The Cast

Jane Austen's Emma



Rachael Gallagher
Emma Woodhouse



Martin Clare
Mr Knightly



Sally Hatton
Harriet Smith



Louise Burgess
Mrs Weston
(Miss Taylor)



Peter Mungovan
Mr Weston



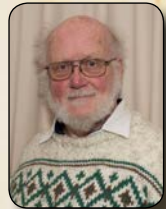
Joan Jones
Miss Bates



Tom Mungovan
Frank Churchill



Rebecca Buckley
Jane Fairfax



Bill Craig
Mr Woodhouse



Chris Matthews
Mr Elton



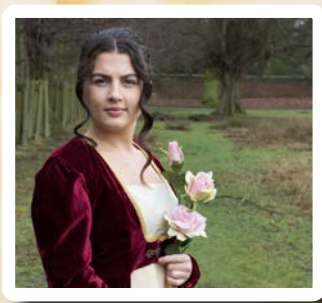
Lindsey Andrews
Augusta Elton



Linda Irish
Mrs Cole



Richard Hankinson
Mr Cole



Running Order

ACT 1

Scene 1	Hartfield
Scene 2	Hartfield
Scene 3	Outside at Randalls
Scene 4	Outside at Highbury
Scene 5	Highbury
Scene 6	Hartfield
Scene 7	Hartfield
Scene 8	Carriage
Scene 9	Carriage

ACT 2

Scene 1	Hartfield
Scene 2	The home of Miss Bates
Scene 3	Hartfield
Scene 4	Hartfield
Scene 5	Outside at Highbury
Scene 6	The home of the Coles
Scene 7	Hartfield

ACT 3

Scene 1	Hartfield
Scene 2	Randalls
Scene 3	The Crown Inn
Scene 4	Hartfield
Scene 5	Donwell Abbey
Scene 6	Outside at Box Hill

ACT 4

Scene 1	The home of Miss Bates
Scene 2	Hartfield
Scene 3	Randalls
Scene 4	Highbury
Scene 5	Outside at Hartfield
Scene 6	Donwell Abbey

(The interval will take place at the end of Act 2.
The raffle will be drawn after Act 3.)

Stationery Of Your Dreams

HANDMADE PAPER STATIONERY



[StationeryOYDreams@etsy.com](https://www.etsy.com/shop/StationeryOYDreams)



[StationeryOfYourDreams](https://www.instagram.com/StationeryOfYourDreams)

Announcements

Joe Arter's
Emma

In the highly unlikely event of a fire, emergency exits are located as follows:

- The main entrance where you came in
- Behind the curtain to your right (as you face the stage)
- Through the kitchen and out of the rear door
- Immediately behind the stage



Please ensure you turn your mobile phone off (or onto silent or flight mode) for the duration of the performance. If you turn your phone on during the interval, please remember to switch it off again before the play resumes.

You are welcome to take photographs, but we kindly ask that you refrain from using flash photography.



Drinks are available both before the show and during the interval. You are welcome to bring drinks into the hall, but please exercise caution. Complimentary tea, coffee and biscuits will be served during the interval. Please note, the bar now accepts card payments.

If you aren't already on our mailing list, please make sure you sign up to receive advance notification of our future productions. You can add yourself directly to our email list by visiting the www.dunhamthespians.org.uk home page.

You can also complete a form available at the bar to receive our postal mail shot.

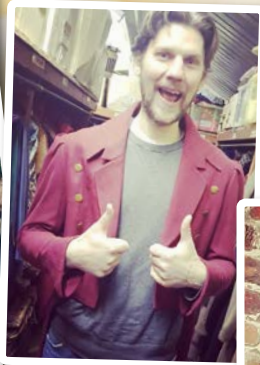


Raffle tickets are available both before the play and during the interval. We always have a healthy selection of prizes, so please make sure you get some tickets. The raffle will be drawn at the end of the interval.

For the hard of hearing, please switch your hearing aid to the 'T' position (or mixed mode). Due to the contour of the ceiling, the loop system runs to around the rear radiators. The signal will degrade in the back few rows. The loop system is still being fine tuned, so please let us know how you find the levels.



Behind The Scenes



A Word from the Director

Jane Austen's Emma

I am not sure if April 2016 seems recent or far away, but "Jane Eyre" was obviously long enough in the memory to make doing another costume drama seem like a good idea. And as with Jane, I didn't learn my lesson - I still threw myself off the deep end and took on too much (is there another way to do an amdram production?) But hopefully all will be worth while and have paid off in the production.



If I could, I would tell so many Austen stories on our stage, but as always we are limited by cast and, I now categorically realise, stage size! The joy of these classics is we somehow seem to recruit new members just at the appropriate time. It has been a pleasure having Lindsey Andrews and Linda Irish join the fold. I also can't thank Lindsey enough for bringing James along to prompt.

I have always felt "Emma" an underrated Austen, and one very much ahead of its time. A woman that does not want to marry? How very unheard of! The biggest appeal I find with "Emma" is that we follow the story through Emma's thoughts and delusions. This misguided young woman that sees fit to meddle with her neighbours' lives, but grows to see the error of her ways and how blind she has been to her own folly. Yet the audience is always on her side.

We are very privileged at the Dunham Thespians to have an array of talented people that lend their time to helping put on a wonderful show. I am always so proud of the programmes and posters we produce, and "Emma" is no exception. Thanks to the fantastic photography of Vanessa Lozano (with maybe a little competitive spirit) and Martin Clare's design. I also cannot thank Trevor Wells enough for always going along with our crazy ideas and making them happen (Millennium Falcon next time, right Trev?)

It has been a pleasure to see Rachael take up the challenge of Emma, and I truly appreciate her level of commitment to the part. I am sure you will all agree she has risen to the challenge. On a personal note, I have to thank my family for putting up with me when I get these ideas into my head. Every spare minute has been spent sewing and trying to make sure everyone has a costume and my mum has definitely helped pick up my slack.

Now if I can just convince someone else to direct a costume drama; I could be on stage instead!

As always, thank you for your continued support and we hope you enjoy the show!

Laura Kinsella.

Crew

Producer / Director
Adaptation
Stage Building

Costumes

Prompt
Props

Lighting / Sound

Photography
Special Effects
Raffle & Refreshments

Design & Artwork

Postal Mailshot

Additional Artwork
Set Dressing
Front of House / Bar

Car Park Attendant
Ticket Manager

Laura Kinsella
Martin Clare
Trevor Wells
Laura Kinsella
Martin Clare
Vanessa Lozano
Bill Craig
John Brooks
Laura Kinsella
Heather Kinsella
James Eckersley
Laura Kinsella
Sally Hatton
Vanessa Lozano
Martin Clare
Vanessa Lozano
Martin Clare
Elizabeth Craig
Pat Burgess
Martin Clare
Vanessa Lozano
Martin Clare
Bella Pratten
Trevor Wells
Helen Weston
The company
Pat Burgess
Vanessa Lozano
Trevor Wells
Martin Clare

Credits

Cast (order of appearance)

Emma Woodhouse
Mr. Woodhouse
Mr. Knightly
Harriet Smith
Mrs. Weston
Mr. Elton
Mr Weston
Miss Bates
Jane Fairfax
Frank Churchill
Mr Cole
Mrs Cole
Augusta Elton

Rachael Gallagher
Bill Craig
Martin Clare
Sally Hatton
Louise Burgess
Chris Matthews
Peter Mungovan
Joan Jones
Rebecca Buckley
Tom Mungovan
Richard Hankinson
Linda Irish
Lindsey Andrews

With Thanks To

Chads Musical Theatre
Wilmslow Guild Theatre
The Rope & Anchor Public House
Red House Farm
Joan Pendlebury
Andrew Bushell & Peter White

**You may have seen that we are collecting donations on
behalf of Metabolic Support UK during this production**

Metabolic Support UK we are the leading patient organisation for Inherited Metabolic Disorders: a range of rare and complex conditions which can impact patients' lives with a variety of challenging symptoms from birth, and which in some cases can be life threatening and life limiting.

We provide patients and their families living with these unique disorders with much needed emotional and practical support where this often none available, whether that is from obtaining or understanding a diagnosis or the day to day challenges of managing their symptoms. We also seek to raise awareness amongst the medical, healthcare, social care and teaching professions and fund research for treatments and ultimately cures.

Dunham Thespians' own Sally Hatton (playing Harriett Smith) has received invaluable support from the charity while living with her own condition, and now works for them developing services for young people.

Thank you



**METABOLIC
SUPPORT UK**
Your rare condition.
Our common fight.

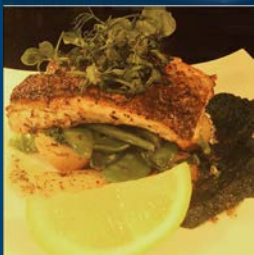
The Rope
&
Anchor.
Dunham Massey



Tucked away in the country lanes near Dunham Massey, the Rope and Anchor is in the perfect location for you to enjoy a family meal after exploring the surrounding countryside, or the ideal venue for a romantic dinner, away from the hustle and bustle of the city.

We have a relaxing bar area where you can enjoy our selection of JW Lees ales, fine wine, spirits and soft drinks. Enjoy our comfortable surroundings, whatever the weather with a modern fire place where you can cosy up for a chat, or you can relax and dine al fresco in our fully waited, extensive, comfortable outdoor seating area in beautiful surroundings.

Not forgetting our younger visitors, we offer an excellent children's menu & a great play area. So, whether you're celebrating an event or just taking a relaxing break, we look forward to welcoming you soon.



If you would like to book a table or enquire about hiring out our amazing function spaces we have provided all the contact details below:

www.theropeandanchor.co.uk

Tel: 0161 927 7901

Twitter : @Rope_Anchor





From The Archives

Jane Austen's
Emma

"Fools Paradise" (Apr 1969)



50 years ago, this farcical comedy by Peter Coke was an early Esmé Duckworth production. The cast included Ron Hutchinson, Lily Smallwood, Mildred Stenton, Edith Skene, Gina Hutchinson, John Sidall, Pamela Harrop and Olwen Barker.

HATS Theatre Group present...

The Ghost Train

by Arnold Ridley

Thur 3rd Oct - Sat 5th Oct 2019

**St. Hugh of Lincoln Parish Hall
Glastonbury Road, Stretford. M32 9PD.**

For tickets call 0161 748 5040

Thank you all for your continued support. We hope you have a lovely summer, and will look forward to welcoming you back to the Village Hall for our next production in the Autumn (27th - 30th November 2019).

Joining The Society

We are always keen to recruit new members to the society, both on stage and behind the scenes.

If you have ever fancied trying your hand at being on stage, or feel like you have something to contribute behind the curtain (as it were), then get in touch. We're a friendly bunch!

Contact Martin on 07789 171 337, or email info@dunhamthespians.org.uk



Committee Officials

Chairman
Vice Chairlady
Treasurer
Secretary
Assistant Secretary
Stage Manager

Martin Clare
Sylvia Rose
Bill Craig
Laura Kinsella
Sally Hatton
Trevor Wells



The Dunham Thespians

The Dunham Thespians

Dunham Massey Village Hall, School Lane, Dunham Massey, Cheshire. WA14 4SE.

Martin Clare - Chairman
07789 171 337

info@dunhamthespians.org.uk
www.dunhamthespians.org.uk

